

DISTRIBUTION FRAMES, SUPPORTING FLANGES AND RING NUTS FOR THREADED CYLINDERS

The distribution frame is connected to the pumping device (booster or control unit), so the pipes to the various cylinders depart from it.
Block of burnished carbon steel.
Comes in 3 models.

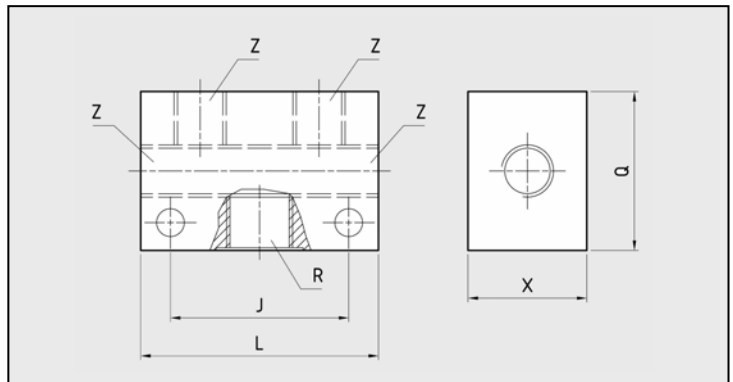
APPLICATIONS

Designed for use in the hydraulic systems of equipment comprised of multiple cylinders, their purpose is to make pipe layouts more compact, tidy and economical.

DIMENSIONS

CODE	R Oil inlet	Z Oil outlet	No. of outputs	DIMENSIONS (mm)			
				J	L	Q	X
Z5242CD4060	3/8G	1/8G	4	45	60	40	30
Z5242CD4080		1/4G					
Z5242CD4090		1/8G	5	65	90		

DISTRIBUTION FRAME - SERIES 42



Burnished carbon steel block.
Comes in 7 models.

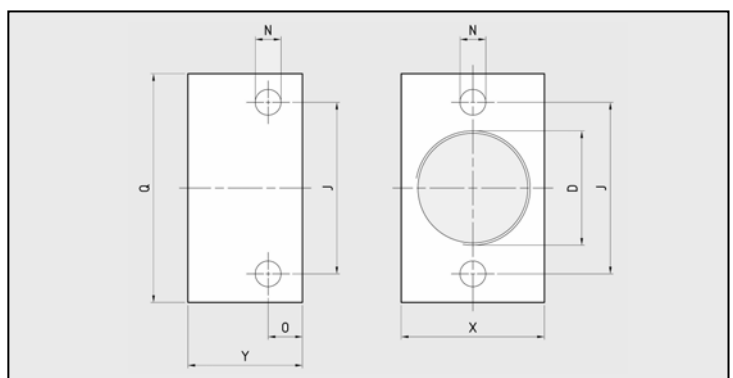
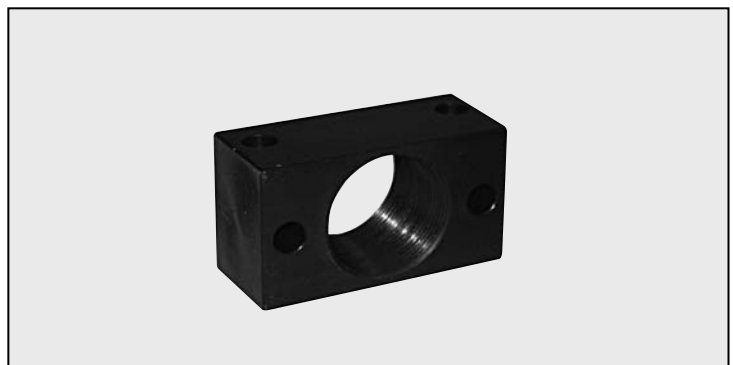
APPLICATIONS

Used as a counter-ring in supports for cylinders with an externally threaded body.

DIMENSIONS

CODE	D	J	N	O	Q	X	Y
Z5244BS2025	M20x1.5	35	7	10	50	25	30
Z5244BS3040	M30x1.5	50	9	12	70	40	
Z5244BS3540	M35x1.5	55					
Z5244BS3640	M36x1.5	60	11	15	80	50	40
Z5244BS4050	M40x1.5				90	60	
Z5244BS4860	M48x1.5	70	11	15	110	90	50
Z5244BS6880	M68x2	90					

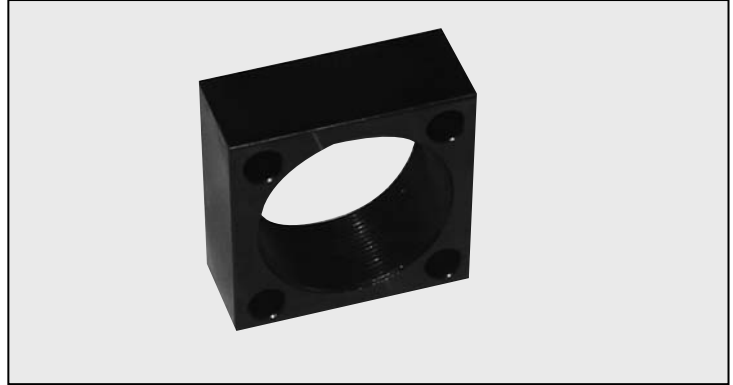
RECTANGULAR FLANGE - SERIES 44



DISTRIBUTION FRAMES, SUPPORTING FLANGES AND RING NUTS FOR THREADED CYLINDERS

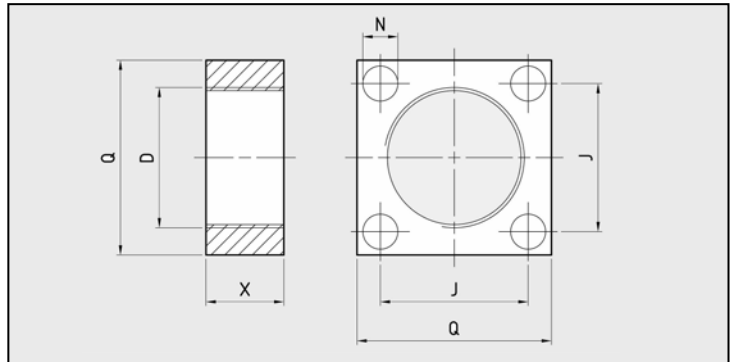
Burnished carbon steel block.
Comes in 4 models.

SQUARE FLANGE - SERIES 46



DIMENSIONS

CODE	D	J	N	Q	X
Z5246BQ3550	M35x1.5	38	9	50	20
Z5246BQ3650	M36x1.5				
Z5246BQ4860	M48x1.5	44		60	25
Z5246BQ6880	M68x2	64	11	80	30



Made of galvanized carbon steel.
Comes in 7 models.

THREADED RING NUT - SERIES 47



APPLICATIONS

Used for the support and easy positioning of cylinders with an externally threaded body.

DIMENSIONS

CODE	D	E	X
Z5247GF2028	M20x1.5	28	5
Z5247GF3045	M30x1.5	45	7
Z5247GF3552	M35x1.5	52	8
Z5247GF3652	M36x1.5		
Z5247GF4058	M40x1.5	58	9
Z5247GF4868	M48x1.5	68	10
Z5247GF6885	M68x2	85	12

